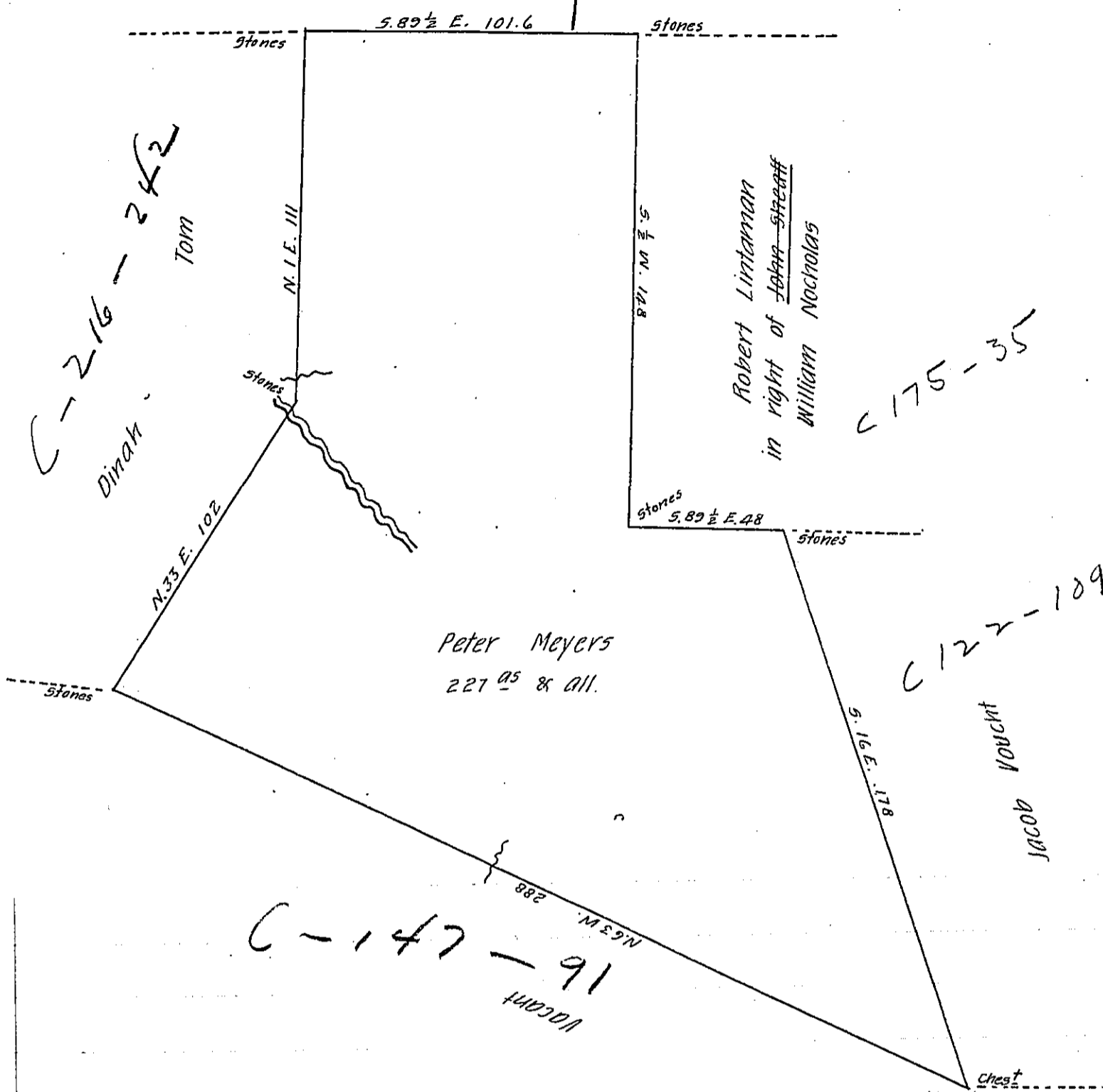


FORM NO. 1.

in Right of John Shoff

Robert Lintaman

C-221-219



Situate in Milford Township, Somerset County, Containing 227 acres & allowance. Surveyed the 25th day of August 1856 in pursuance of a Warrant dated the 25th day of July 1856, granted to the said Peter Meyers for 227^{acs}

pr Martin Meyer Dep. Sur.

To J. Porter Brawley Esq }
 Surveyor General }

IN TESTIMONY that the above is a copy of the original remaining on file in the Department of Internal Affairs of Pennsylvania, made conformably to an Act of Assembly approved the 16th day of February, 1833, I have hereunto set my Hand and caused the Seal of said Department to be affixed at Harrisburg, this twenty fifth day of September 1906

Laac D Brown
 Secretary of Internal Affairs.